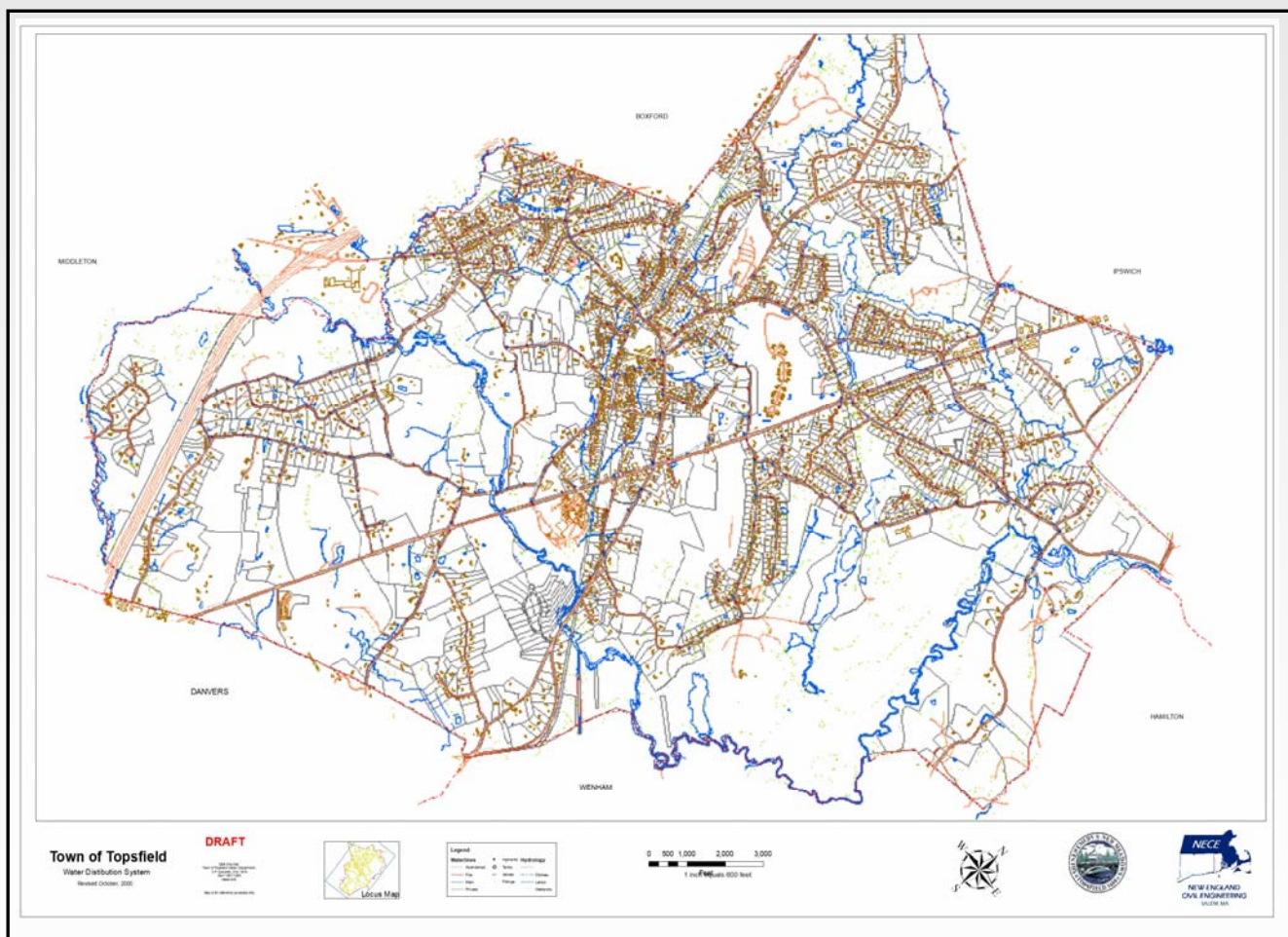


Water Distribution System GIS Mapping

Topsfield, Gloucester, Grafton Water District (2005-2006)

Created GIS distribution system map of entire distribution system including water mains, valves, hydrants, wells, tanks, and pumps. Map incorporated orthophotography, street lines, buildings, property lines, wetlands, and other surface features. Project involved document review of available water and drainage record drawings, tie cards, and flyover information. All record drawings were scanned and imported into the same coordinate system as the client's GIS layers. Water infrastructure was digitized over the record drawing information and hyperlinked to the drawings from each pipe segment. All pipes and features were populated with age, condition, and serviceability information.



NEW ENGLAND CIVIL ENGINEERING CORP.

120 WASHINGTON STREET, SUITE 202E, P.O. BOX 3026, SALEM, MA 01970
PH: 978.741.7401 - FAX: 978.741.7402 - WWW.ENGINEERINGCORPORATION.COM