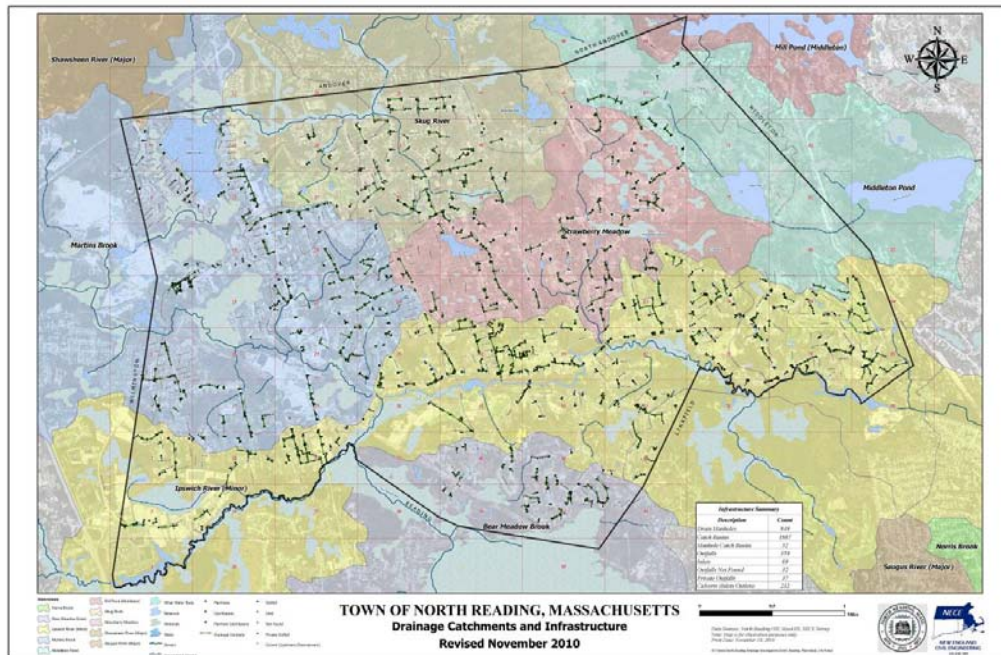
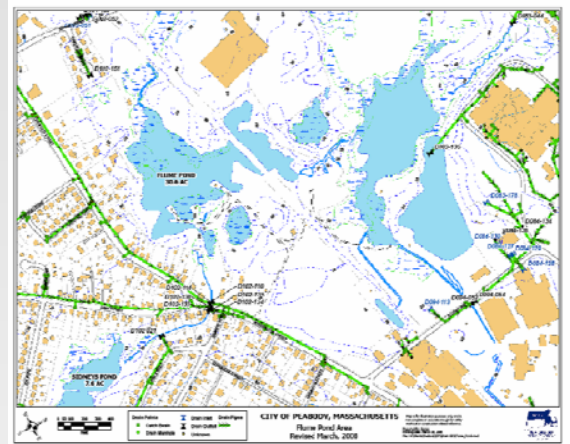


Drainage Survey and GIS Mapping, Catchment Delineation

Sample Drainage Mapping Projects

- North Reading, MA (Town-wide) — 2009-Present
- Ipswich, MA (Town-wide)— 2008-Present
- Salem, MA (South River catchment) — 2008-2009
- Peabody, MA (City-wide) — 2007-2008

Complete plan review, field investigations, and GPS survey of all drainage infrastructure. Develop GIS map identifying the locations of all drainage infrastructure including outfalls, culverts, manholes, catch basins, and pipes. Final maps include thousands of catch basins and manholes, hundreds of outfalls, and miles of drain pipe. Geodatabases include populated attributes for all manholes, hyperlinks to internal manhole photos, and numbering system to identify major, minor, and surface water body catchment areas and maintenance information. Complete field work with GPS handheld data collectors, deliver electronic and hard copies of GIS system maps.



NEW ENGLAND CIVIL ENGINEERING CORP.

120 WASHINGTON STREET, SUITE 202E, P.O. BOX 3026, SALEM, MA 01970
PH: 978.741.7401 - FAX: 978.741.7402 - WWW.ENGINEERINGCORPORATION.COM