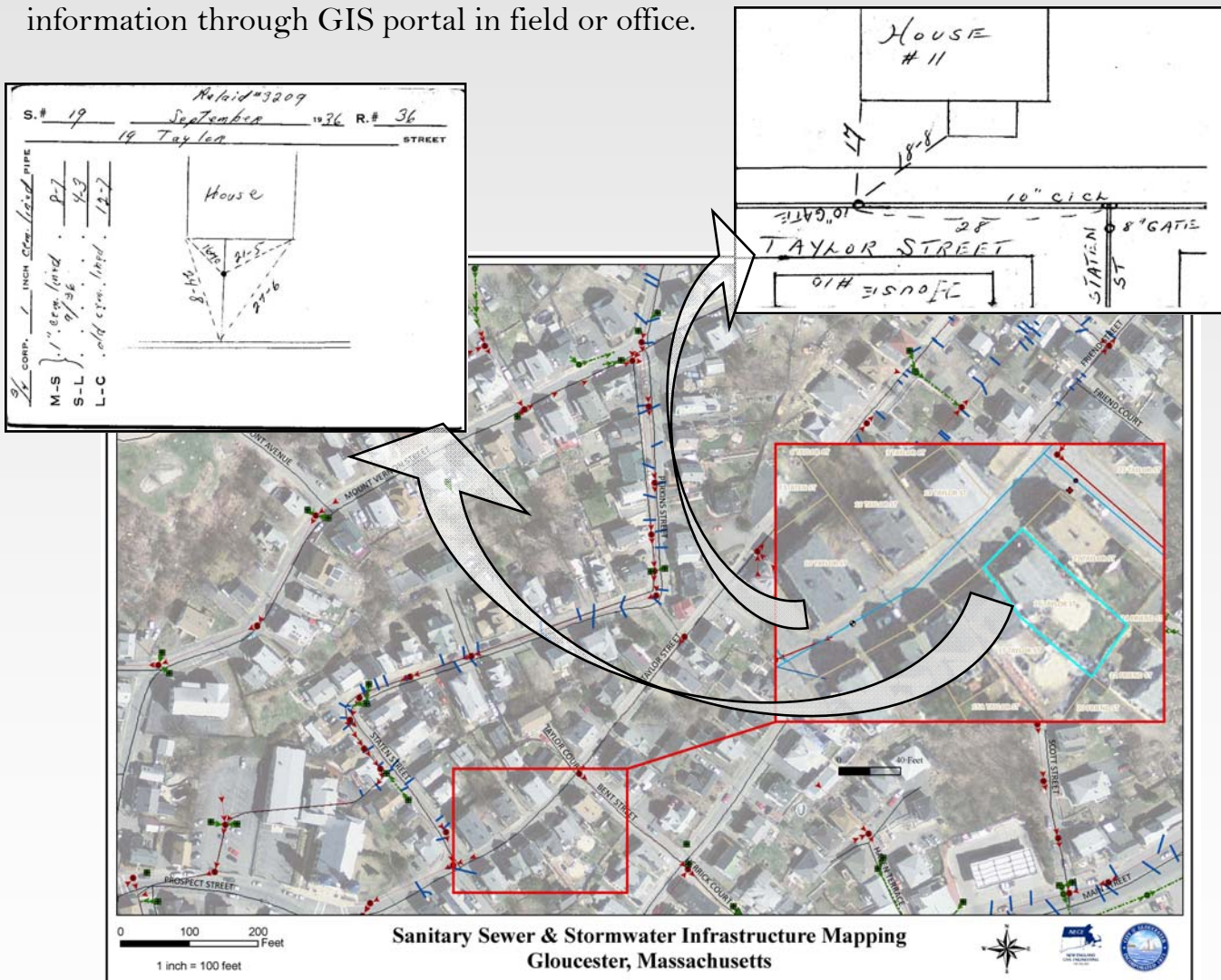


Citywide Water Mapping & Digital Archive Development

Gloucester, Massachusetts (2010)

Developed GIS water distribution layer with features for 140 miles of pipes as well as valve, hydrant, service, and isolation “curb stop” valve locations. Project involved scanning 10,800 water service “tie cards” and 3,200 water (isolation and hydrant) gate valve cards to .pdf format, and renaming all scans to reference GIS features for parcel ID and/or valve ID. Developed GIS water feature map and geodatabase. Images linked to property and/or valve features on GIS map and stored in city-wide geodatabase to allow access to information through GIS portal in field or office.



NEW ENGLAND CIVIL ENGINEERING CORP.

120 WASHINGTON STREET, SUITE 202E, P.O. BOX 3026, SALEM, MA 01970
PH: 978.741.7401 - FAX: 978.741.7402 - WWW.ENGINEERINGCORPORATION.COM